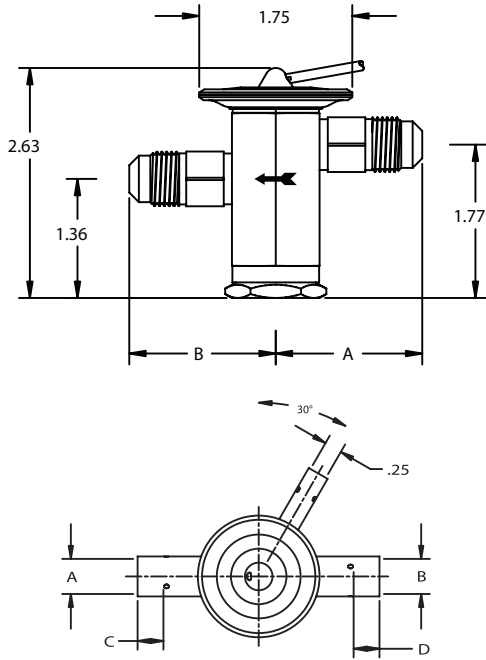


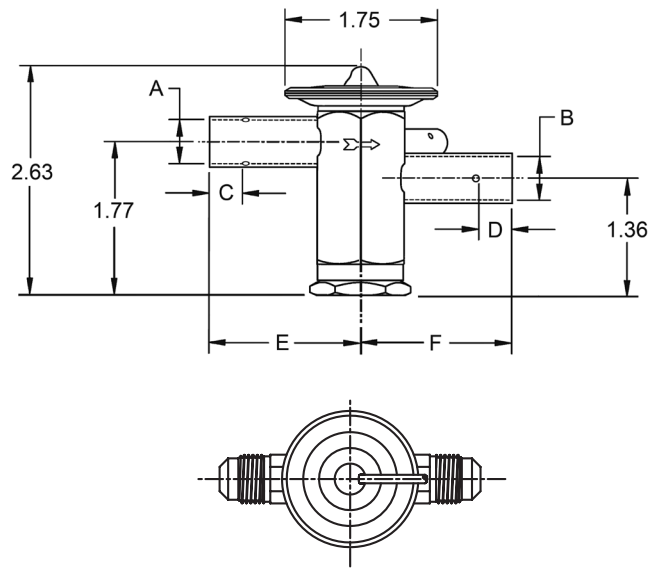
ANCE SAE Dimensional Data

Connection Size		A	B
Inlet	Outlet		
3/8 SAE	3/8 SAE	1.67	1.67
1/2 SAE	1/2 SAE	1.75	1.75



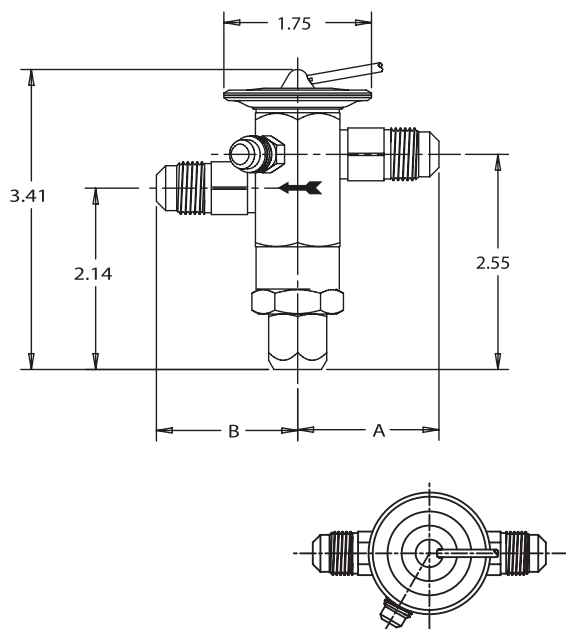
ANCE ODF Dimensional Data

Connection Size		A± .002	B± .002	C MIN	D MIN	E	F
Inlet	Outlet						
1/4 ODF	3/8 ODF	0.25	0.38	0.32	0.32	1.70	1.73
3/8 ODF	3/8 ODF	0.38	0.38	0.32	0.32	1.70	1.73
3/8 ODF	1/2 ODF	0.38	0.50	0.32	0.38	1.73	1.73
1/2 ODF	1/2 ODF	0.50	0.50	0.38	0.38	1.73	1.73
1/2 ODF	5/8 ODF	0.63	0.61	0.38	0.50	1.75	1.75



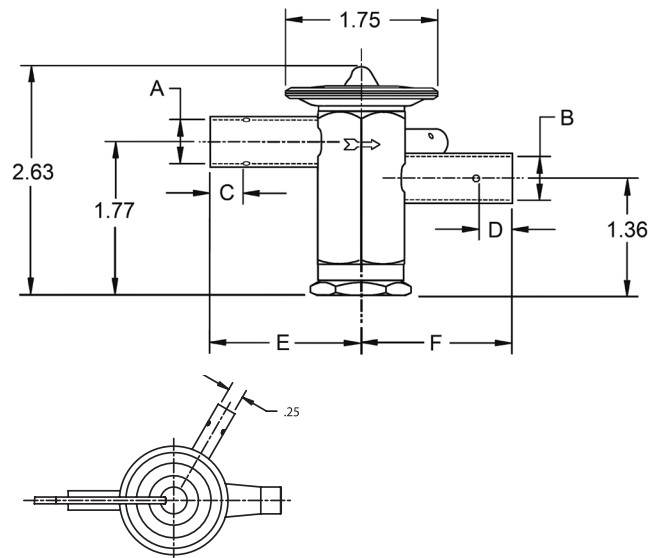
AACE SAE Dimensional Data

Connection Size		A	B
Inlet	Outlet		
3/8 SAE	3/8 SAE	1.67	1.67
1/2 SAE	1/2 SAE	1.75	1.75



AACE ODF Dimensional Data

Connection Size		A± .002	B± .002	C MIN	D MIN	E	F
Inlet	Outlet						
1/4 ODF	3/8 ODF	0.25	0.38	0.32	0.32	1.70	1.73
3/8 ODF	3/8 ODF	0.38	0.38	0.32	0.32	1.70	1.73
3/8 ODF	1/2 ODF	0.38	0.50	0.32	0.38	1.73	1.73
1/2 ODF	1/2 ODF	0.50	0.50	0.38	0.38	1.73	1.73
1/2 ODF	5/8 ODF	0.63	0.61	0.38	0.50	1.75	1.75



Ordering Information

Without Internal Check Valve

Refrigerant	Series	Tons*	Charge	Connections	Cap Tube	PCN
R-410A	AAE	1-1/2	ZW195	3/8 X 1/2 ODF S/T	30 IN	066515
			ZW195	3/8 X 3/8 ODF S/T	30 IN	064595
		3	ZW195	3/8 X 1/2 ODF S/T	30 IN	065579
			ZW195	CHATLEFF	30 IN	015776
			ZW195	1/2 X 5/8 ODF S/T	30 IN	065580
R-134a R-12	AA	1/8	MC	1/4 X 3/8 ODF S/T	30 IN	066030
			MC	1/4 X 1/2 ODF S/T	30 IN	065821
		1/4	MC	1/4 X 3/8 ODF S/T	30 IN	062051
			MC	1/4 X 1/2 ODF S/T	5 FT	065623
		1	MC	3/8 X 1/2 ODF S/T	30 IN	065776
R-22 R-407C	AAE	1/2	MC	1/4 X 3/8 SAE S/T	30 IN	058985
			MC	1/4 X 1/2 ODF S/T	5 FT	065624
		1/2	MZ	1/4 X 3/8 SAE S/T	30 IN	058986
		1/2	MC	1/4 X 1/2 ODF S/T	5 FT	065630
		1	MC	3/8 X 1/2 ODF S/T	5 FT	065631
R-22 R-407C	AA	1/4	HC	1/4 X 3/8 ODF S/T	5 FT	056315
			HC	1/4 X 1/2 ODF S/T	5 FT	055932
		1/2	HC	1/4 X 1/2 ODF S/T	5 FT	065626
			HC	3/8 X 3/8 ODF S/T	30 IN	056547
		1	HC	3/8 X 1/2 SAE S/T	5 FT	057828
			HC	1/4 X 1/2 ODF S/T	5 FT	065632
		1/2	HC	3/8 X 1/2 ODF S/T	5 FT	065633
			HC	3/8 X 1/2 SAE ST	5 FT	057987
		1	HC	1/4 X 3/8 ODF ST	30 IN	059582
			HC	1/4 X 1/2 ODF S/T	5 FT	065634
	1-1/2	HC	3/8 X 1/2 ODF S/T	5 FT	065635	
		HC	3/8 X 1/2 ODF S/T	5 FT	064424	
	2	HC	3/8 X 1/2 ODF S/T	5 FT	064425	
		HCA	3/8 X 1/2 ODF S/T	30 IN	049632	
	2-1/2	HAA	3/8 X 1/2 ODF S/T	30 IN	063648	
		HAA	CHATLEFF	30 IN	013938	
	3	HCA	3/8 X 1/2 ODF S/T	30 IN	049633	
		HCA	3/8 X 1/2 SAE S/T	30 IN	049634	
	4	HCA	1/2 X 5/8 ODF S/T	30 IN	060643	
		HCA	1/2 X 5/8 ODF S/T	5 FT	061960	
	5	HCA	3/8 X 1/2 ODF S/T	30 IN	049638	
		HCA	1/2 X 1/2 ODF S/T	30 IN	061247	
	AAEB	5	HAA	3/8 X 1/2 ODF S/T	30 IN	063649
			HAA	CHATLEFF	30 IN	013939
	AAEB	2	HC	1/2 X 5/8 ODF S/T	5 FT	059565
			HC	5/8 X 7/8 ODF S/T	30 IN	061805
	AAEB	3	HCA	3/8 X 1/2 ODF S/T	30 IN	054024
			HCA	1/2 X 5/8 ODF S/T	30 IN	059683
	AAEB	4	HW100	3/8 X 5/8 ODF S/T	5 FT	062088
			HCA	3/8 X 1/2 ODF S/T	30 IN	059616
	AAEB	3	HCA	3/8 X 1/2 ODF S/T	30 IN	059603
			HCA	1/2 X 1/2 ODF S/T	30 IN	059605
	AAEB	5	HCA	1/2 X 1/2 ODF S/T	30 IN	059607

Chatleff Gasket Kit – KG 10045 (PCN: 066031)

* For interchangeable refrigerant charges R-134a/R-12, R-404A/R-507/R-502, and R-22/R-407C, the tons of capacity shown in the table are for the first (primary) refrigerant listed. Consult the Nominal Capacity Table for determining the tons of capacity for the secondary refrigerants listed.

Example: A 1/4 ton R-12 valve is required. What R-134a ton valve should be selected?

Solution: From the Nominal Capacity Table, a 1/2 ton R-134a valve is equivalent to a 1/4 ton R-12 valve.

Without Internal Check Valve (cont.)

Refrigerant	Series	Tons*	Charge	Connections	Cap Tube	PCN
R-404A R-507 R-502	AA	1/8	SC	1/4 X 3/8 ODF S/T 6A	30 IN	065921
			SC	1/4 X 1/2 ODF S/T	30 IN	063503
		1/4	SW45	1/4 X 3/8 ODF S/T	5 FT	065676
			SZ	1/4 X 3/8 ODF S/T	5 FT	065675
		1/2	SC	1/4 X 1/2 ODF S/T	30 IN	063504
			SW45	1/4 X 1/2 ODF S/T	5 FT	065685
		3/4	SZ	1/4 X 1/2 ODF S/T	5 FT	065682
			SC	3/8 X 1/2 ODF S/T	30 IN	063925
		1	SC	3/8 X 1/2 ODF S/T	30 IN	066200
			SW45	3/8 X 1/2 ODF S/T	30 IN	065686
		1-1/4	SZ	3/8 X 1/2 ODF S/T	30 IN	065149
			SC	3/8 X 1/2 ODF S/T	30 IN	066201
		1-1/2	SC	1/4 X 1/2 ODF S/T	30 IN	066422
			SC	3/8 X 1/2 ODF S/T	5 FT	066085
		2	SW45	1/4 X 1/2 ODF S/T	5 FT	065636
			SW45	3/8 X 1/2 ODF S/T	5 FT	065688
		2-1/4	SZ	1/4 X 1/2 ODF S/T	30 IN	066436
			SZ	3/8 X 1/2 ODF S/T	5 FT	065687
		3	SC	3/8 X 1/2 ODF S/T	5 FT	066086
			SZ	1/4 X 1/2 ODF S/T	30 IN	066437
		3-1/4	SC	3/8 X 1/2 ODF S/T	5 FT	066087
			SW45	3/8 X 1/2 ODF S/T	5 FT	065637
		1	SZ	3/8 X 1/2 ODF S/T	5 FT	065183
			SC	3/8 X 1/2 ODF S/T	5 FT	066081
		1-1/4	SW45	3/8 X 1/2 ODF S/T	5 FT	066079
			SZ	3/8 X 1/2 ODF S/T	5 FT	066080
		1-1/2	SC	3/8 X 1/2 ODF S/T	5 FT	066448
			SW45	3/8 X 1/2 ODF S/T	5 FT	065698
		2	SZ	3/8 X 1/2 ODF S/T	5 FT	065697
			SC	3/8 X 1/2 ODF S/T	30 IN	065330
		2-1/4	SW45	3/8 X 1/2 ODF S/T	5 FT	065690
			SZ	3/8 X 1/2 ODF S/T	5 FT	065689
		2-1/2	SW45	3/8 X 1/2 ODF S/T	5 FT	066082
			SZ	3/8 X 1/2 ODF S/T	5 FT	066083
		3	SC	3/8 X 1/2 ODF S/T	5 FT	066084
			SW45	1/2 X 5/8 ODF S/T	5 FT	065148
		3	SW45	3/8 X 1/2 ODF S/T	5 FT	065693
			SZ	3/8 X 1/2 ODF S/T	5 FT	065692

With Internal Check Valve

Refrigerant	Series	Tons*	Charge	Connections	Cap Tube	PCN
R-410A	AAE	1-1/2	ZW195	3/8 X 1/2 ODF S/T	5 FT	065871
			ZW195	CHATLEFF	30 IN	016432
		2	ZW195	3/8 X 1/2 ODF S/T	5 FT	065872
			ZW195	CHATLEFF	30 IN	016615
		3	ZW195	3/8 X 1/2 ODF S/T	5 FT	065873
			ZW195	CHATLEFF	30 IN	015795
		4	ZW195	3/8 X 1/2 ODF S/T	5 FT	065874
			ZW195	CHATLEFF	30 IN	016433
		5	ZW195	1/2 X 5/8 ODF S/T	5 FT	065875
			ZW195	CHATLEFF	30 IN	015796
	AAE	1-1/2	ZW195	3/8 X 1/2 ODF S/T	30 IN	065946
			ZW195	3/8 X 1/2 ODF S/T	30 IN	065942
		2	ZW195	3/8 X 1/2 ODF S/T	30 IN	065943
			ZW195	3/8 X 1/2 ODF S/T	30 IN	065944
		3	ZW195	3/8 X 1/2 ODF S/T	30 IN	065945
			ZW195	3/8 X 1/2 ODF S/T	30 IN	065946
		4	HCA	3/8 X 1/2 ODF S/T	30 IN	063795
			HCA	3/8 X 1/2 ODF S/T	5 FT	058923
		2-1/2	HAA	3/8 X 1/2 ODF S/T	30 IN	064102
			HAA	CHATLEFF	30 IN	014091
3	HCA	3/8 X 1/2 ODF S/T	5 FT	065868		
	HCA	1/2 X 5/8 ODF S/T	5 FT	065797		
4	HCA	3/8 X 1/2 ODF S/T	5 FT	065869		
	HAA	3/8 X 1/2 ODF S/T	30 IN	064103		
5	HAA	CHATLEFF	30 IN	014092		
	HAA	1/2 X 5/8 ODF S/T	5 FT	065863		
AAE	1-1/2	HCA	3/8 X 1/2 ODF S/T	30 IN	065842	
		HCA	3/8 X 1/2 ODF S/T	30 IN	065959	
	3	HCA	3/8 X 1/2 ODF S/T	30 IN	065941	
		HCA	3/8 X 5/8 ODF S/T	30 IN	065844	

The AFA series is designed for air conditioning and commercial refrigeration applications requiring angle configuration SAE connections. The AFA is ideal for those applications requiring compact size combined with stable and accurate control over wide load and evaporator temperature ranges.

Features

- Stainless steel power element eliminates corrosion and prevents valve failure
- External superheat adjustment
- Replaceable inlet strainer
- SAE connections only
- Wrench flats on inlet and outlet



Options

- External or internal equalizer

Specifications

- Maximum working pressure: 700 psig
- UR/CUR file number: SA 5312

Nomenclature example: AFAE 1/2 HC 5 FT 3/8 x 1/2 SAE ANG

AF	A	E	1/2	H	C	5 FT	3/8 x 1/2	SAE	ANG
Valve Series Hermetic Design, Flare Connections	Superheat Adjustment A = Adjustable	Equalizer E=External (Omit for Internal)	Capacity Nominal Rating in Tons (See nominal capacity table below)	Refrigerant Code +F = R-12 • H = R-22 +M = R-134a • N = R-407C *P = R-507 *R = R-502 *S = R-404A Z = R-410A	Charge Code C = medium temp CA = heat pump W(MOP) = press. limiting Z = low temp AA = wide range	Capillary Tube Length 30 IN & 5 FT (std)	Inlet x Outlet Connection Sizes 1/4 x 3/8 3/8 x 1/2	Connection Type SAE=flare	Configuration ANG = 90° angle

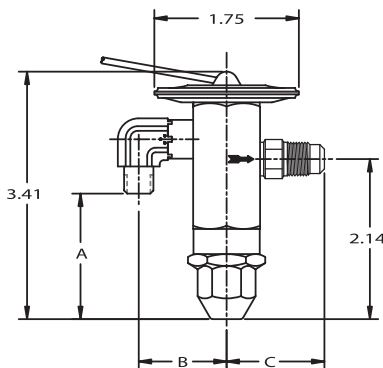
+ = R-12 and R-134a are interchangeable refrigerant charges, * = R-507, R-502 and R-404A are interchangeable refrigerant charges, • = R-22 and R-407C are interchangeable refrigerant charges

AFA Series – Nominal* Capacity Table in Tons (kW)

R-12	R-134a	R-22	R-502	R-507/R-404A	R-407C
-	1/8 (0.4)	1/5 (0.7)	-	1/8 (0.4)	1/5 (0.7)
1/8 (0.4)	1/4 (0.9)	1/4 (0.9)	1/8 (0.4)	1/4 (0.9)	1/4 (0.9)
1/4 (0.9)	1/2 (1.8)	1/2 (1.8)	1/4 (0.9)	1/2 (1.8)	1/2 (1.8)
1/2 (1.8)	3/4 (2.7)	1 (3.5)	1/2 (1.8)	3/4 (2.7)	1 (3.5)
1 (3.5)	1 (3.5)	1½ (5.3)	1 (3.5)	1 (3.5)	1¼ (4.4)
-	1½ (5.3)	2 (7.0)	-	1¼ (4.4)	2 (7.0)
1½ (5.3)	2 (7.0)	2½ (9.0)	1½ (5.3)	2 (7.0)	2½ (9.0)
2 (7.0)	2½ (9.0)	3 (11.0)	2 (7.0)	2½ (8.0)	3¼ (11.5)
-	3 (11.0)	-	-	2½ (9.0)	4 (14.0)
3 (11.0)	4 (14.0)	5 (17.0)	3 (11.0)	3½ (12.0)	5¼ (19.0)

All capacities shown are at 100°F condensing, 40°F evaporator temperature.
*See Extended Capacity Tables for ratings at a wide range of conditions per ARI standard 750.

Dimensional Data



Remote Bulb Tubing Length 30" or 5' Standard

AFA(E) Connections (in)				
Inlet	Outlet	A	B	C
1/4 SAE elbow	3/8 SAE	1.56	1.31	1.64
	1/2 SAE			1.35
	5/8 SAE			1.98
	3/8 – 1/2 SAE			1.73
3/8 SAE elbow	3/8 SAE	1.47	1.31	1.34
	1/2 SAE			1.36
	5/8 SAE			1.98
	3/8 – 1/2 SAE			1.73

