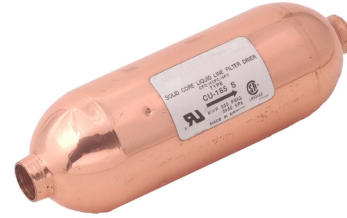


The CU series is a high capacity spun copper solid core filter drier ideal for superior corrosion resistance in ocean going vessels and coastal applications.

### Features

- All copper construction for extreme corrosion resistance
- 100% molecular sieve solid core drier
- For use with CFC, HCFC and HFC refrigerants



### Nomenclature example: CU 163S

<b>CU</b>	<b>16</b>	<b>3</b>	<b>S</b>
Series	Unit Size	Connection Size (in 1/8")	ODF

### Specifications

- Maximum working pressure: 500 psig
- Filtration: 40 microns
- UL/CUL file number: SA 7175

### Ordering Information and Capacity Tables

PCN	Description	Connection	Flow Capacity Tons @ 1 psi ΔP <sup>14</sup> (For kW, multiply tons by 3.5)					Water Capacity <sup>2</sup> Drops of Water <sup>3</sup>												
								R-12		R-134a		R-22		R-407C		R-404A/ R-507		R-502		
			R-12	R-134a	R-22	R-407C	R-404A/R-507	75°F	125°F	75°F	125°F	75°F	125°F	75°F	125°F	75°F	125°F	75°F	125°F	
064388	CU 03 2 S	1/4 ODF	1.4	1.7	1.8	1.8	1.2	96	87	93	87	87	81	72	57	96	93	90	81	
064389	CU 03 3 S	3/8 ODF	2.1	2.6	2.8	2.7	1.9	112	101	108	101	101	93	82	63	112	108	104	93	
064390	CU 05 2 S	1/4 ODF	1.5	1.8	2.0	2.0	1.3													
064391	CU 05 3 S	3/8 ODF	2.1	2.6	2.8	2.7	1.9	212	191	205	191	191	177	156	122	212	205	198	177	
064392	CU 08 2 S	1/4 ODF	1.6	1.9	2.1	2.1	1.4													
064393	CU 08 3 S	3/8 ODF	2.9	3.5	3.8	3.7	2.5	287	257	277	257	257	237	207	158	287	277	267	237	
064394	CU 08 4 S	1/2 ODF	3.5	4.2	4.6	4.5	3.1													
064395	CU 16 3 S	3/8 ODF	3.3	4.0	4.3	4.2	2.9	287	257	277	257	257	237	207	158	287	277	267	237	
064396	CU 16 4 S	1/2 ODF	3.9	4.7	5.1	5.0	3.4													
064397	CU 16 5 S	5/8 ODF	4.4	5.4	5.8	5.7	3.9													

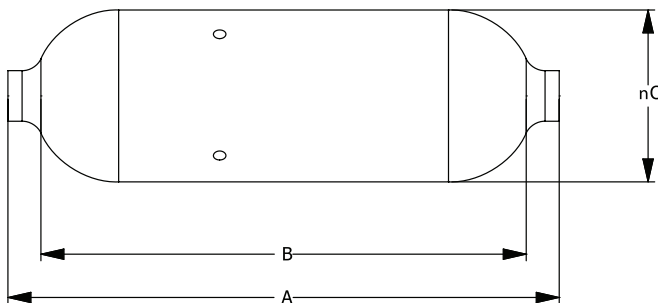
<sup>1</sup> All ratings in accordance with ARI Standard 710-04. 86°F liquid refrigerant temperature  
5°F saturated vapor temperature  
3.1 lbs./min./ton for R-134a  
2.9 lbs./min./ton for R-22 and R-407C  
4.0 lbs./min./ton for R-404A/507 and R-12  
2.7 lbs./min./ton for R-410A

<sup>2</sup> Water Capacities are based on:  
Equilibrium Point Dryness (EPD) of:  
50 parts per million for R-134a, R404-A/507,  
R-410A and R-407C  
60 parts per million for R-22  
15 parts per million for R-12

<sup>3</sup> 20 drops of water = 1 gram = 1 cc

<sup>4</sup> For 2 PSI ΔP, Multiply values by 1.4

### Dimensional Data (in)



Description	Overall Length (A)	Lay-In Dimension (B)	Diameter
CU 03	3.94	3.25	1.63
CU 05	5.19	4.50	1.63
CU 08	6.06	5.38	2.00
CU 16	6.63	6.00	2.00

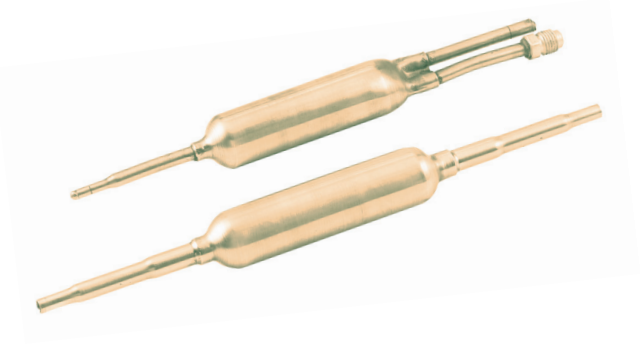
Recommended for use in original equipment or replacement residential, air-conditioning or refrigeration equipment.

### Features

- All copper construction for extreme corrosion resistance
- 100% molecular sieve solid core drier
- For use with CFC, HCFC and HFC refrigerants

### Specifications

- Maximum working pressure: 500 psig
- Filtration: 100 microns
- UL/CUL file number: SA 7175



### Ordering Information and Capacity Tables

PCN	Description	Parker Equivalent	Connections		Flow Capacity Tons @ 1 psi ΔP <sup>14</sup> (For kW, multiply tons by 3.5)			Water Capacity <sup>2</sup> Drops of Water <sup>3</sup>					
								R-134a		R-22		R-404A/R-507	
			Inlet	Outlet	R-12/R-134a	R-22/ R-410A	R-404A/ R-507	75°F	125°F	75°F	125°F	75°F	125°F
064023	CU-80	MMS-80	1/4 ODF	1/4 ODF	.33	.5	.33	25	23	25	22	23	23
064026	CU-619	620-SP	1/4 ODF	Cap	.5	.5	1.5	25	23	25	22	23	23
064027	CU-620	620	5/16 ODF	Cap	1.0	2.0	1.0	50	46	50	44	46	46
064119	CU-621	621	5/16 ODF	Cap	.5	.5	1.5	50	46	50	44	46	46
064024	CU-200	MMS-200	5/16 ODF, 3/8 ODF	5/16 ODF, 3/8 ODF	.75	1.0	.75	50	46	50	44	46	46
064025	CU-319	319	5/16 ODF	Cap	1.0	2.0	1.0	75	66	75	66	69	69

Standard Product Offering

<sup>1</sup> All ratings in accordance with ARI Standard 710-04. 86°F liquid refrigerant temperature  
5°F saturated vapor temperature  
3.1 lbs./min./ton for R-134a  
2.9 lbs./min./ton for R-22 and R-407C  
4.0 lbs./min./ton for R-404A/507 and R-12  
2.7 lbs./min./ton for R-410A

<sup>2</sup> Water Capacities are based on:  
Equilibrium Point Dryness (EPD) of:  
50 parts per million for R-134a, R404-A/507,  
R-410A and R-407C  
60 parts per million for R-22  
15 parts per million for R-12

<sup>3</sup> 20 drops of water = 1 gram = 1 cc

<sup>4</sup> For 2 PSI ΔP, Multiply values by 1.4

### Dimensional Data (in)

Description	Length	Diameter
CU-80	7 3/8	3/4
CU-619	8 7/8	3/4
CU-620	9 1/2	1
CU-621	9	1
CU-200	10 1/2	1
CU-319	9 3/4	1 3/16